

lumen

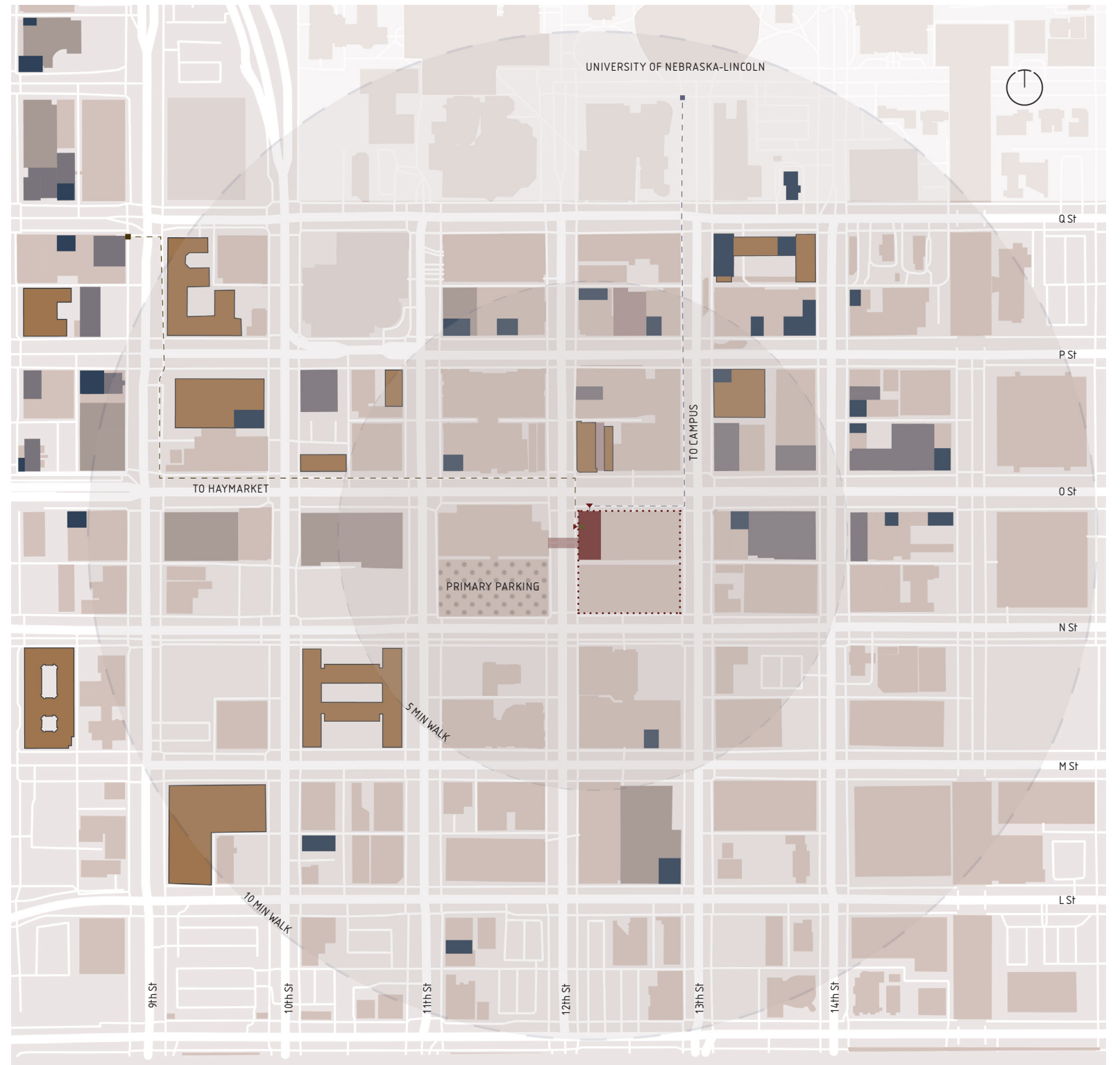
x

echo•haus

## [ the problem ]

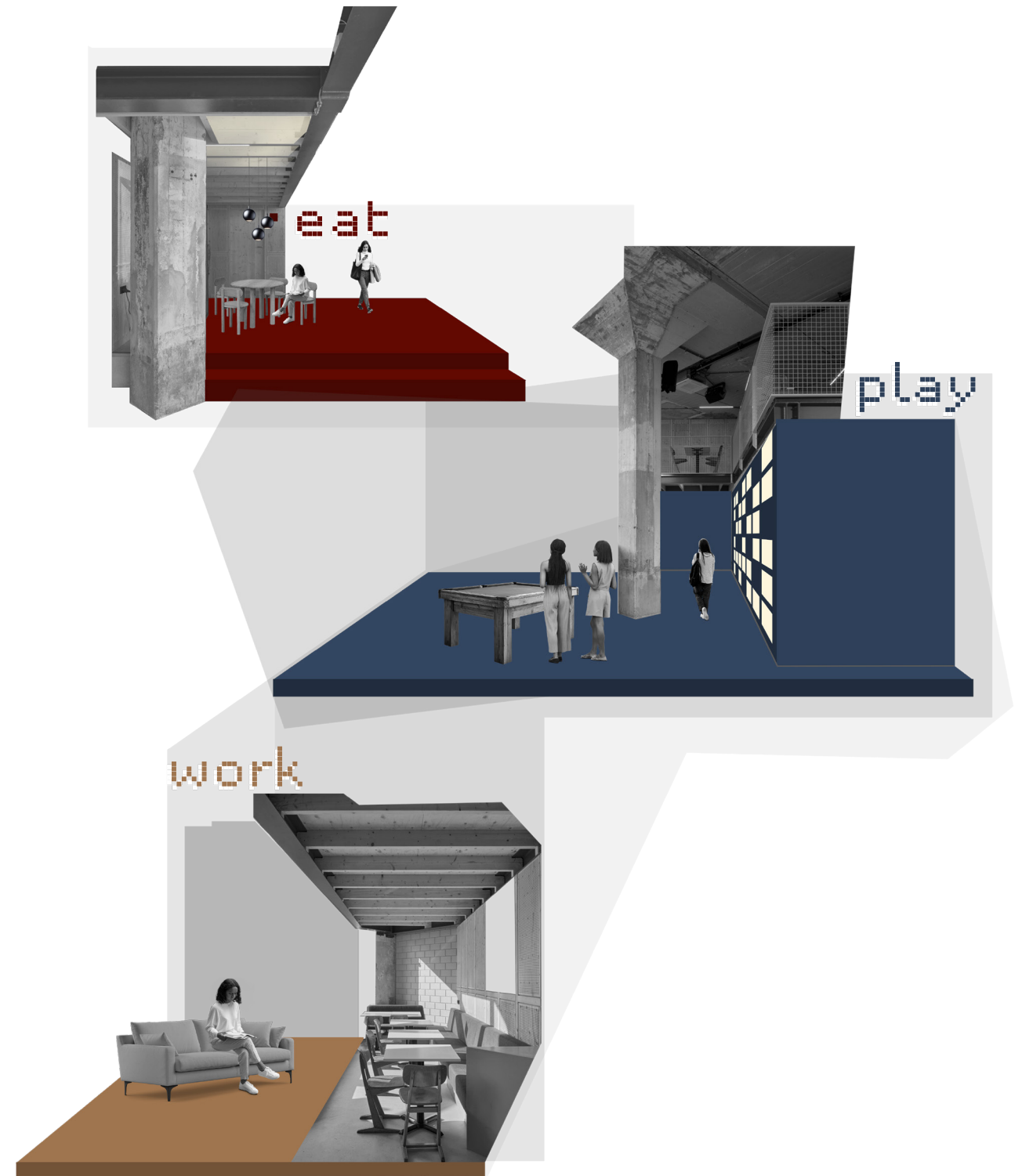
In Lincoln, college students and young professionals lack access to inclusive, multifunctional spaces that reflect the rhythms of their daily lives. The things that most often bring people together—working, eating, and engaging in recreation—are too often separated by time, location, or limited to environments centered around alcohol. As a result, there are few safe, welcoming places where individuals can gather organically, build community, and engage across different needs and schedules. This disconnect contributes to a fragmented experience of campus and city life, particularly for those seeking connection beyond the classroom or bar scene.

- Magee Building
- Student Apartment
- Bar
- Hotel
- Restaurant



## [ project statement ]

This project reimagines 1201 O St in Lincoln, NE, as a vibrant 24-hour establishment that **bridges the gap between dining, community engagement, and productivity.** The adaptive reuse of this downtown building includes two independent establishments that cater to students and young professionals looking to eat, play and work—at all hours. With remote work, late-night study needs, and a lack of non-bar, late-night options near campus, this project fills a crucial gap. By repurposing an existing structure, it revitalizes downtown while promoting safety, accessibility, and inclusivity for those needing a reliable and engaging all-hours space.



## [ research overview ]

### How is this concept beneficial to the community + why is it needed?

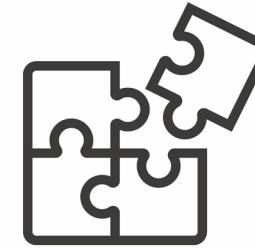
#### [ a ] Role Of Day And Night Use In Downtown Revitalization

- Day-to-night spaces activate urban areas around the clock, **increasing foot traffic, safety, and economic vitality** by bridging gaps between traditional business hours and nightlife.



#### [ b ] The Neuroscience of Play + Engagement

- **Playful design enhances well-being and social connection** by activating the brain's reward systems, fostering creativity, and encouraging spontaneous interaction—making everyday spaces more engaging and memorable.



### What design strategies can make this space successful?

#### [ c ] Restaurant Design Strategies for Community Wellness + Engagement

- Booths and semi-enclosed seating support psychological comfort, offering a sense of privacy, protection, and personal space that **reduces social anxiety and encourages relaxed conversation** (Sommer, *Personal Space: The Behavioral Basis of Design*).



#### [ d ] Encouraging Productivity in a Dynamic Study Environment

- Biophilic design elements—like natural light, greenery, and organic materials—**enhance cognitive function** and reduce stress, leading to improved focus, mood, and academic performance.



# [ translation into design goals ]

How is this concept beneficial to the community + why is it needed?

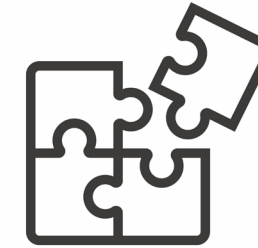
## [ a ] Role Of Day And Night Use In Downtown Revitalization

- **Create a Transitional Day-to-Night Experience**
- *Shift in lighting + flexible, multi-use spaces*



## [ b ] The Neuroscience of Play + Engagement

- **Foster a Sense of Community & Belonging**
- *Interactive elements that encourage collaboration with strangers.*



What design strategies can make this space successful?

## [ c ] Restaurant Design Strategies for Community Wellness + Engagement

- **Promote an Energetic + Comfortable User Experience**
- *Balance playful materiality with the creation of semi-enclosed zones*



## [ d ] Encouraging Productivity in a Dynamic Study Environment

- **Facilitate Productivity and Focus in a Dynamic Environment**
- *Biophilic elements + diverse study space options*



[ process ]

eat play

Restaurant + Interactive Lounge

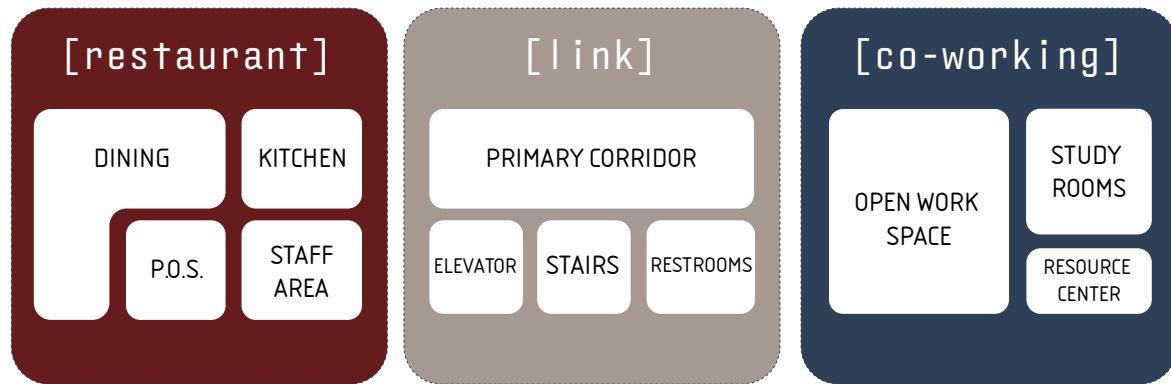
Lumen

work

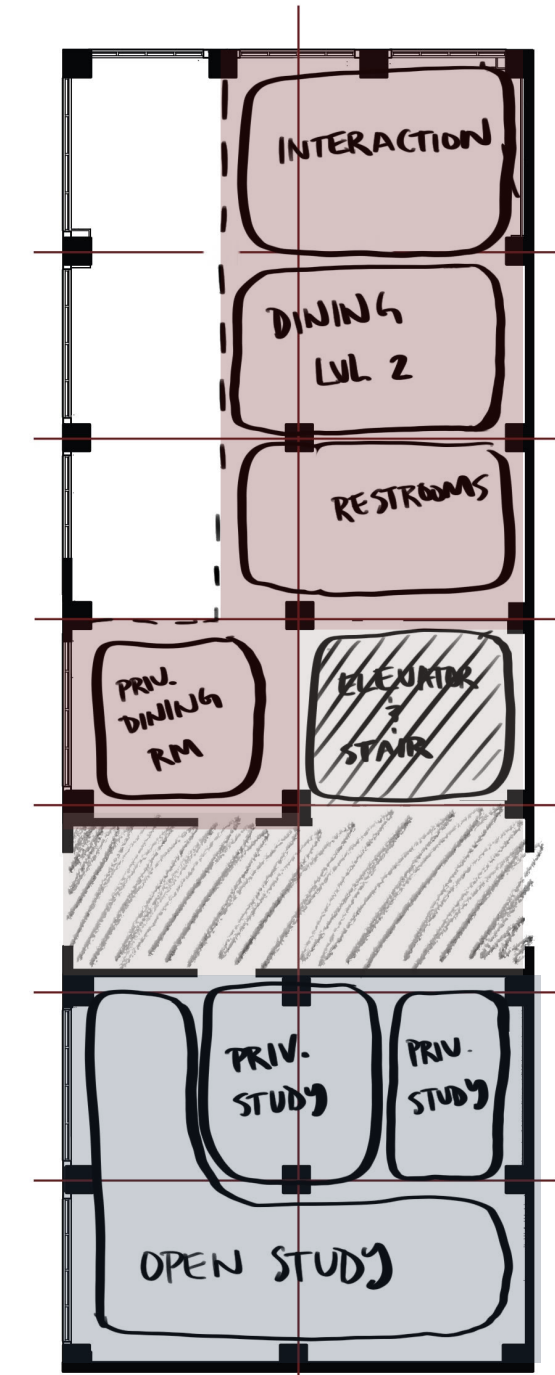
Co-working Space

Echohaus

[ grouping program ]



[ floor i ]

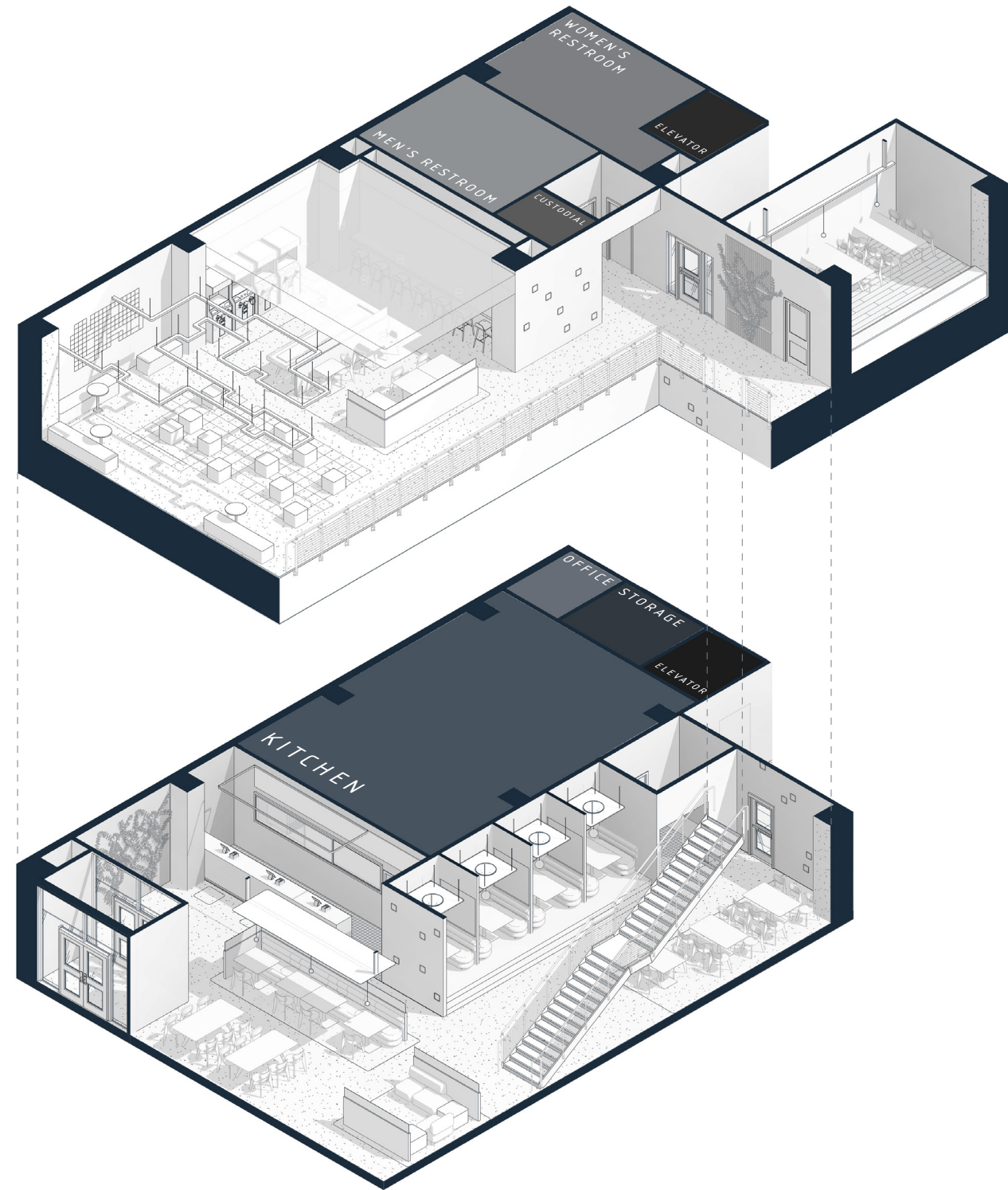


[ floor ii ]

# Lumen

The north section of the Magee Building hosts *Lumen*, a two-story, fast-causal (counter service with a delivery model) restaurant and interactive lounge. *Lumen* is open 24-hours on weekends, and focuses on creating a dynamic day-to-night experience through a shift in lighting. This space intends on filling a gap in late-night dining and non-alcoholic establishments downtown, while creating a playful, energetic environment that encourages interaction.

*Lumen* features LED wall-mounted “pixels” that guide the user from the main entrance through its primary dining areas, concluding at its second story interactive experience. This installation invites users to push square stools along a floor-mounted track system, arranging these “pixels” in a manner that matches a pattern displayed on the adjacent wall.





Hot Drinks		Cold Drinks		Lunch & Snacks	
Espresso.....\$5.00	Cappuccino.....\$8.00	Green Tea.....\$4.00	Lemonade.....\$4.00	Ham & Swiss.....\$7.00	Choc. Chip Cookie.....\$3.00
Americano.....\$7.00	Flat White.....\$8.00	Matcha Latte...\$6.00	Iced Coffee.....\$5.00	Egg Bites.....\$5.00	Crossaint.....\$6.00
Latte.....\$5.00	Macchiato.....\$9.00	London Fog.....\$5.00	Cold Brew.....\$5.00	Grapes & Cheese...\$4.00	Bagel & Cream Cheese...\$5.00

lume

[ entry ]



[ booth seating AM ]

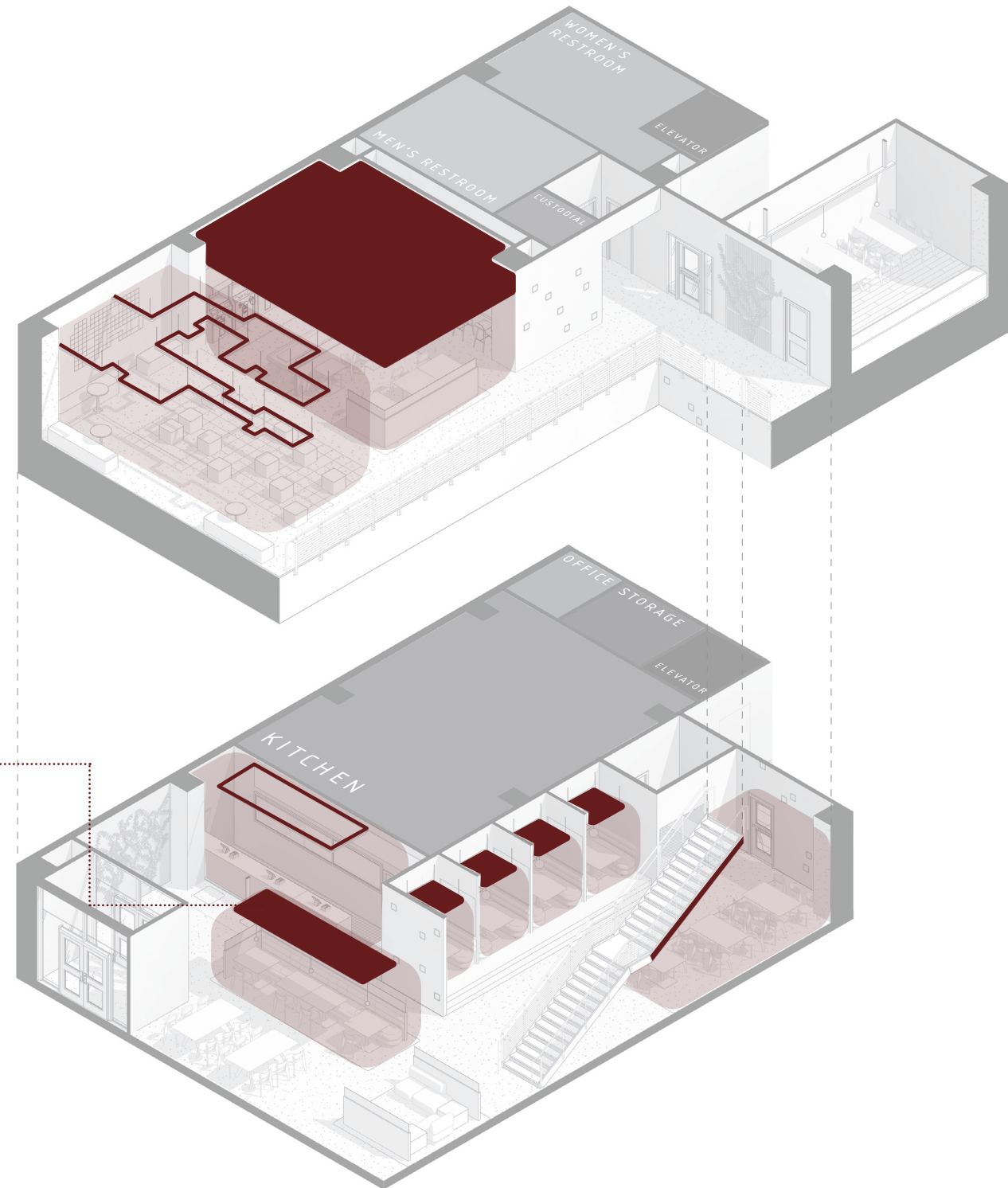


[ booth seating PM ]

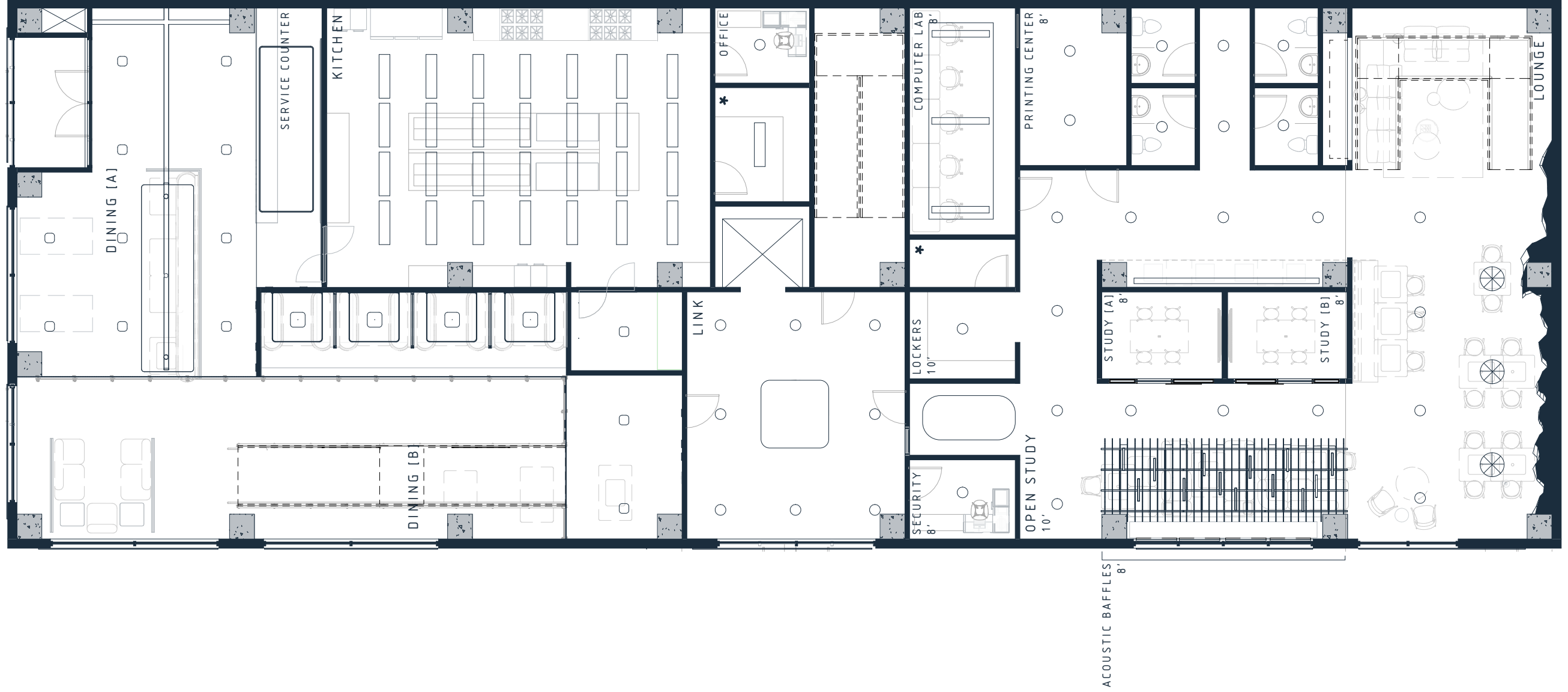
## [ zoning + enclosure ]

Research in environmental psychology and hospitality design strongly supports the implementation of zoning and semi-enclosed areas within restaurant spaces to enhance user experience. Studies show that diners often seek **varying levels of privacy, autonomy, and atmosphere** depending on their mood, group size, and activity. By creating distinct zones—such as booths, nooks, or partitioned areas—diverse needs are accommodated within the same space.

Zoning also supports practical benefits, such as better **acoustic control, smoother traffic flow, and the ability to adjust lighting** and ambiance based on the time of day. This allows the space to transition seamlessly from a bright, energizing environment during the day to a moody, intimate setting at night.



[ reflected ceiling plan floor i ]

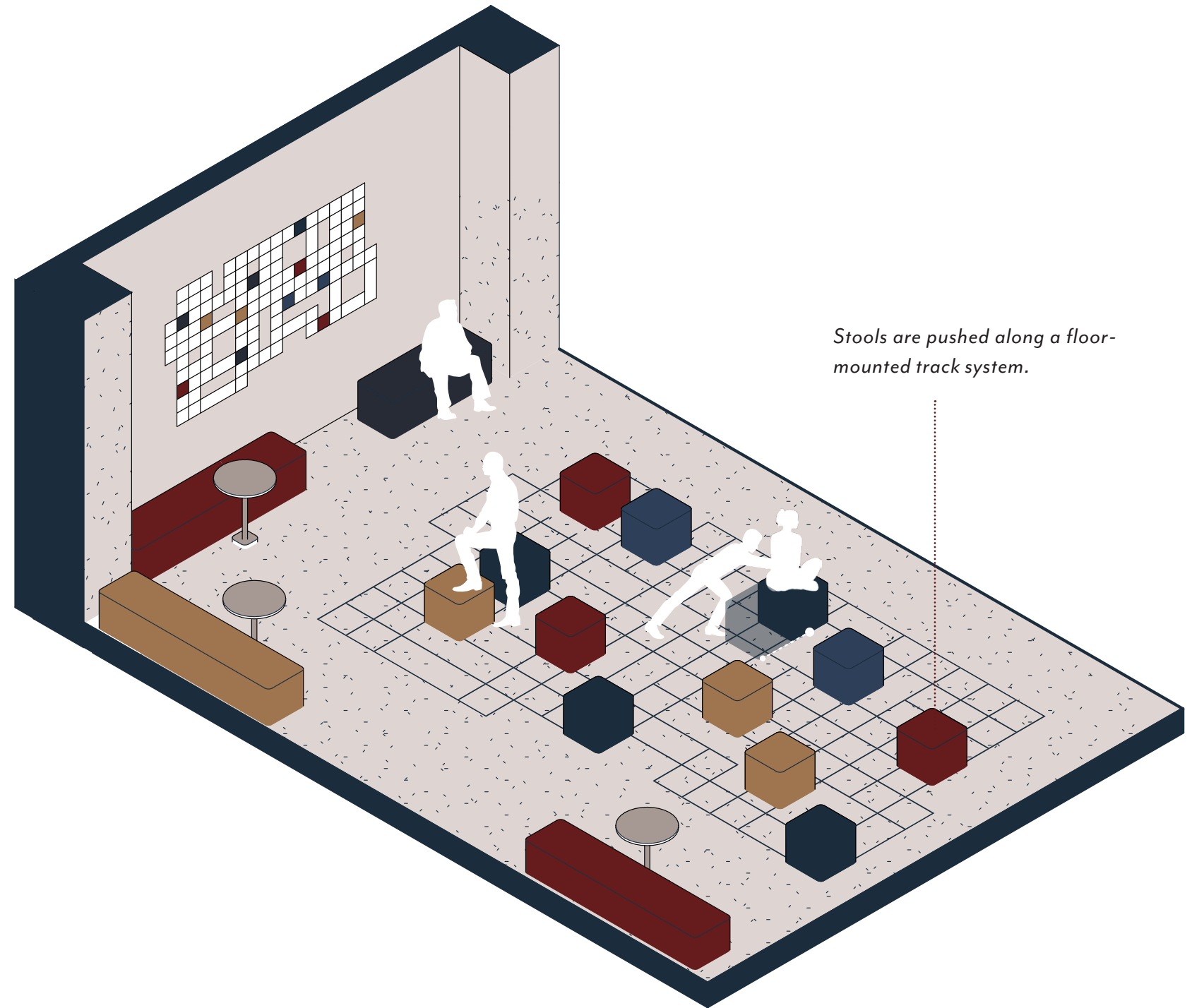
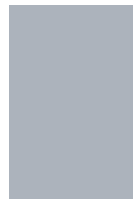


## [ interactive lounge ]

This installation invites users to push square stools along a floor-mounted track system, arranging these “pixels” in a manner that matches a user-adjustable pattern displayed on the adjacent wall.

Structured games and puzzles foster social connection by creating a shared goal, which encourages cooperation, communication, and a sense of belonging—key components of group cohesion and positive interpersonal relationships (Deci & Ryan, 1985; Vygotsky, 1978). Psychologically, engaging in collaborative play activates reward centers in the brain and reduces social barriers, making it easier for individuals to bond through low-stakes, enjoyable interaction.

Floor II

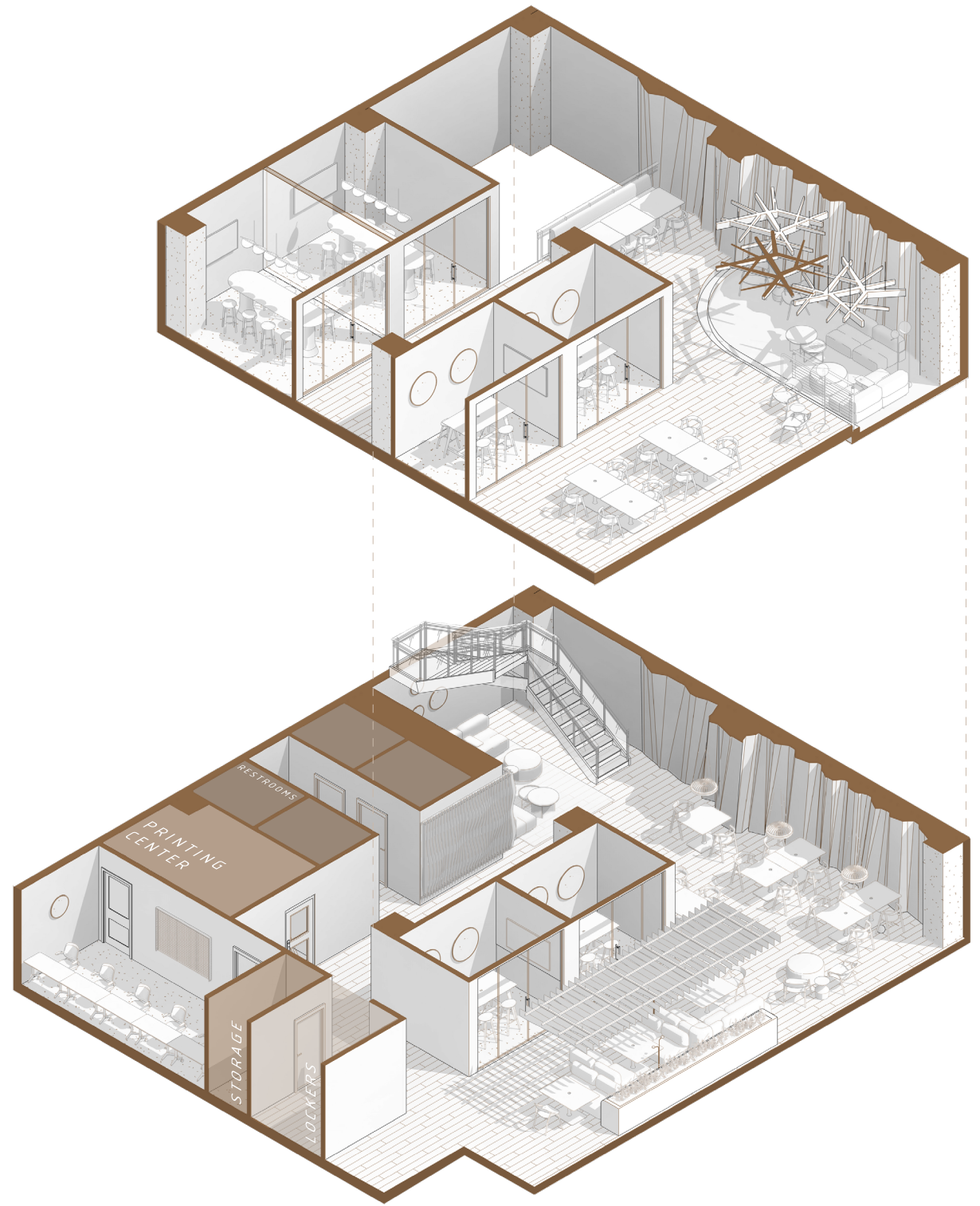




# echo•haus

*Echohaus* is a by-subscription co-working and study space, targeting the primary demographic of the surrounding area (college students and young professionals). This space creates an off-campus destination for individual or group work, with varying seating options and arrangements.

This space drastically contrasts *Lumen* in materiality, separating work from play while distinguishing the two as separate establishments. Biophilic features, including greenery and a large rock facade, lounge spaces and user-adjustable lighting make this space ideal for productive, focused work.





[ open study ]



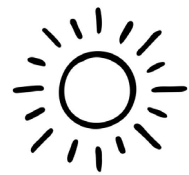
[ second level lounge + open study ]

# [ biophilic influence ]

Biophilic design, which incorporates natural elements like daylight, greenery, and organic materials, can significantly enhance cognitive function and reduce stress, leading to improved productivity. By creating environments that connect occupants to nature, this space can foster well-being and focus, supporting both mental clarity and sustained work performance.



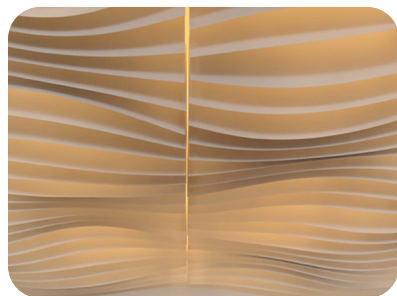
**Tree Canopy**  
Arborisa® Axil ceiling clouds.



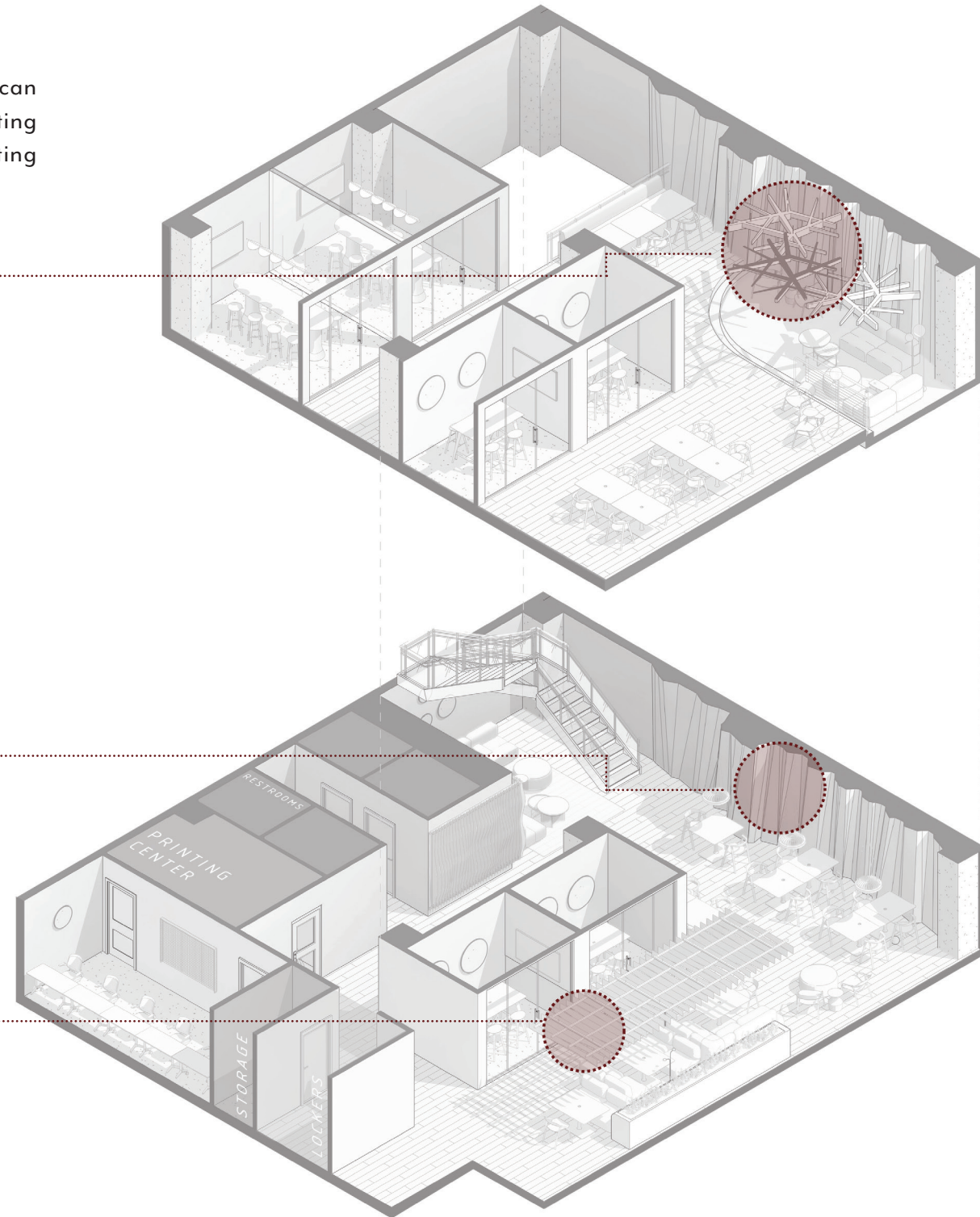
**Sunshine**  
Floor-to-ceiling unobstructed windows.



**Along the Rocks**  
Natural rock face wall application.

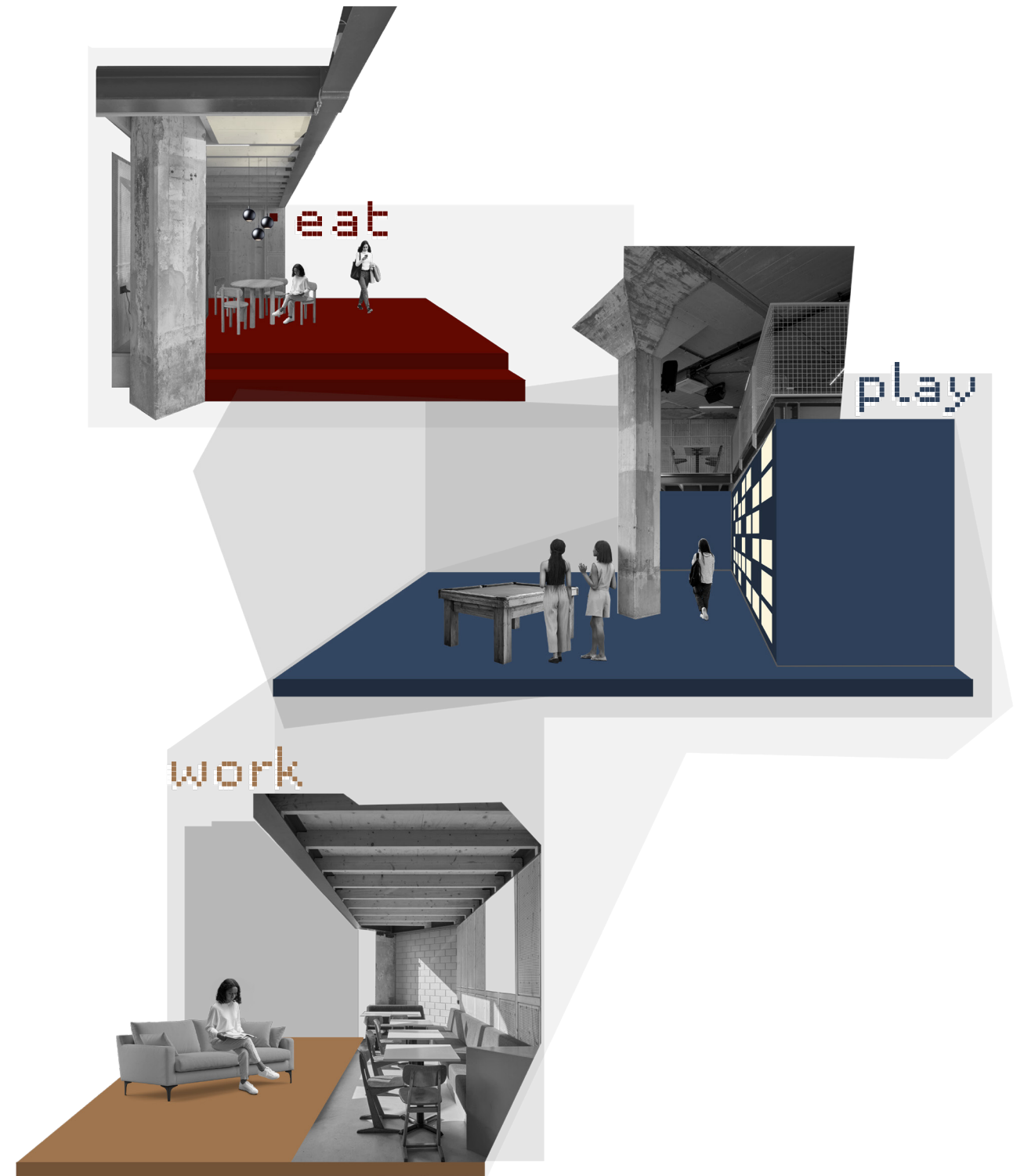


**Flowing Stream**  
Atmosfera® Adaptive Contour 3D baffles.



# lumen x echo.haus

Lumen provides nourishment and opportunities for social connection, while Echohaus supports focus, creativity, and flexibility. Together, they support a full cycle of daily needs for students, professionals, and visitors alike.





[ thank you ]